

PROMOTION

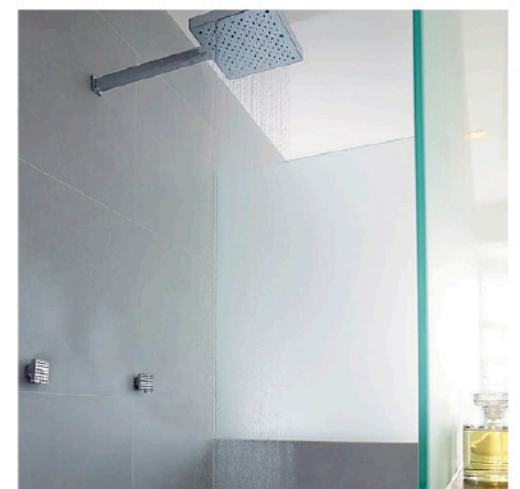
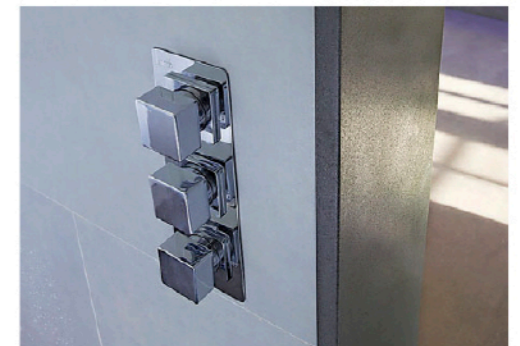
# AWARD-WINNING DESIGN

For this award-winning bathroom design, the client's brief to Exeter-based Sapphire Spaces was simple: 'design a space that has impact'



## BREATHTAKING DESIGNS

"Working with David at Sapphire has been the most amazing experience. Not only is he one of the nicest people I have ever had the pleasure of working with, but each of his designs are breathtaking. David's evocative creativity at the planning stage of the project left other companies light-years behind."



THE CHALLENGE to create a stunning guest bathroom was met by David Aspinall, Director and Designer at Sapphire Spaces, who went on to beat competition from around the country to win Ultimate Luxury Bathroom Design of the Year in the 13th annual Designer Kitchen and Bathroom Awards

"Our clients are both style and quality conscious and wanted

to create a memorable environment for guests to feel special in when visiting," he explains.

Sapphire Spaces, based opposite Darts Farm near Exeter, pride themselves on creating first class living environments for their clients in homes ranging from stunning new builds and conversions to terrace houses and West Country cottages – and

have been developing an enviable reputation for their stunning bespoke projects utilising the very best in international brands.

David said: "Being a designer is a challenging but hugely rewarding job. This is our third national recognition this year, which is fantastic. I get a real buzz thinking about how my designs can enhance a home and the way a client lives."





eliminating the need for trim. Coverlam was also used on the basin wall for the same reason.

The free standing bath by Ashton and Bentley compliments the wall and the bath filler, matches the one used over the basin, provides a tranquil flow of water. On the main side wall David used two sculptural towel rails for in anthracite which are both practical and visually pleasing. Behind the bathing wall David used specialist shower and body jets which, due to their unique manufacturing process, provide years of perfect performance as no limescale can attach.

*Sapphire Spaces pride themselves on creating first class living environments for their clients*

The drainage system used offers an edge to edge gully made from marine grade stainless steel. The system also allowed David to use one 1200x1200mm tile for the shower base greatly reducing grout lines for a neat finish. Storage recesses have also been incorporated.

The Ultimate Luxury Bathroom Design of the Year in the 13th annual Designer Kitchen and Bathroom Awards recognise the very best in kitchen and bathroom design across England, Scotland, Wales and Northern Ireland. Alongside David's award win, Managing Director Mark Newbery made this year's Designer Kitchen and Bathroom's d-list. The list highlights 20 of the UK's best designers. Earlier in the year, Sapphire Spaces won another top award, for Bathroom Showroom of the Year at the KBB Review Retail and Design Awards 2015.



"Each of our clients is so important to us. We work to realise their dreams, and that is incredibly satisfying. What we love about being based in the South West is the variety. We work on such a mix of projects, but all of them exciting."

The winning design used a unique combination of products to create the perfect atmosphere, with features including architectural glass, touch-activated mirror and an illusion wall with chromo-therapy lighting.

Key to their success is working with top brands. "We don't just work with one or two brands as this limits choice and availability of some great bathroom solutions," he says. David's designs use products from many different brands to create the perfect combination for each client. In this particular design the Wing Basin by Falper was used to give an instant 'wow' and David designed a false wall to be built out which is fitted with back-lit chromotherapy lighting to frame the basin and create atmosphere. The mirror, also by Falper, is touch activated and the minimal elegance of Dornbracht's wall mounted basin mixer doesn't detract from the basin.

David added a mid-height wall to the bath area which creates a cosy feel when bathing but also completes a T-shape which screens a shower area and toilet area behind. The wall includes storage recesses that also light up. The glass screen from wall to ceiling provides light and stability. The UV bonded T-section follows the wall meaning no other stabilisation is required.

As the room is quite large David finished the bathing wall with aluminium, multi-toned, elongated mosaics to add interest and depth. The tiles are framed with a basalt edge and he used a product called Coverlam inside the recesses as it gives a very thin edge



Above: David Aspinall, from Sapphire Spaces, being presented with his award at the Designer Kitchen and Bathroom Awards 2015. Left to right: Jay Philips from Hansgrohe (award sponsors), David Aspinall and TV presenter Rachel Riley